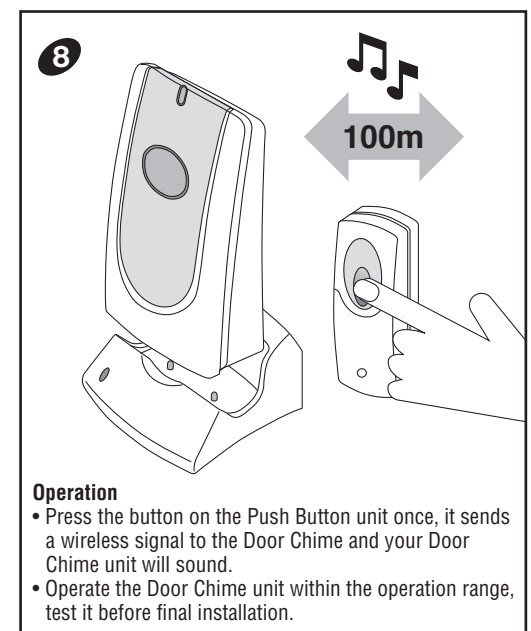
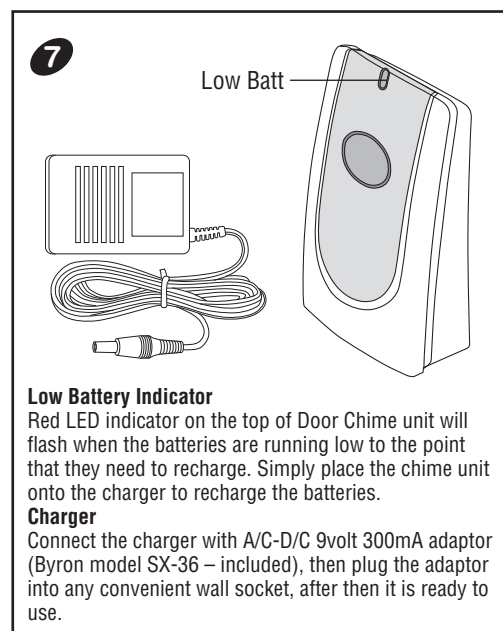
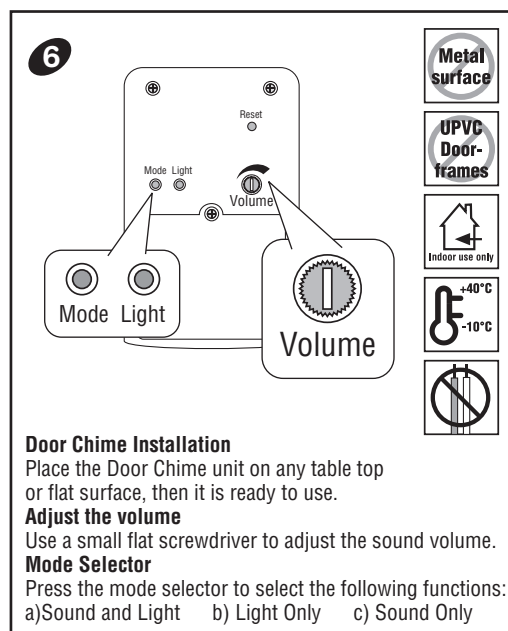
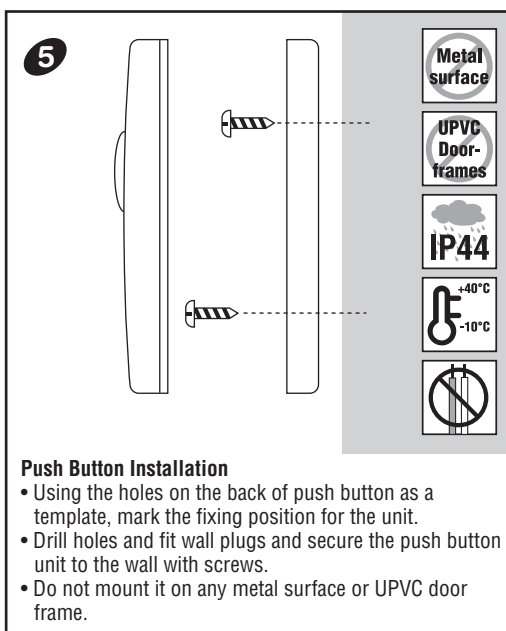
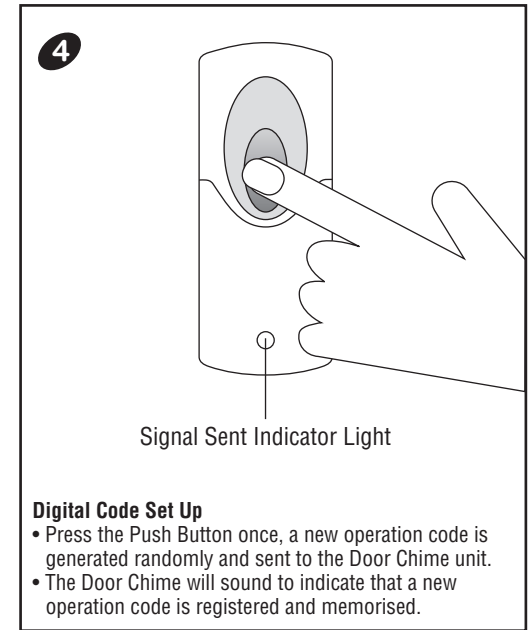
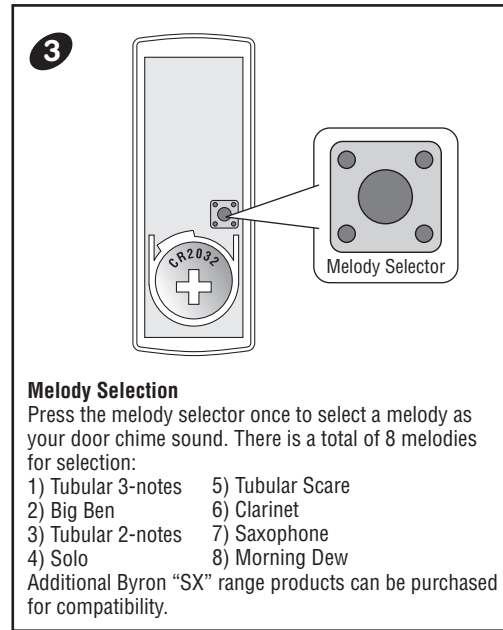
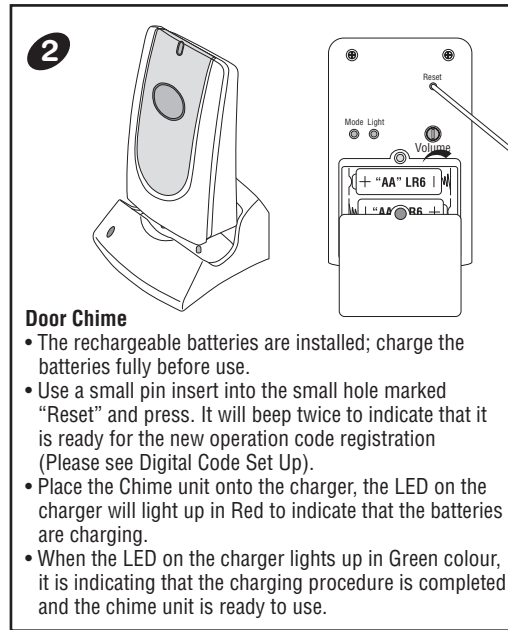
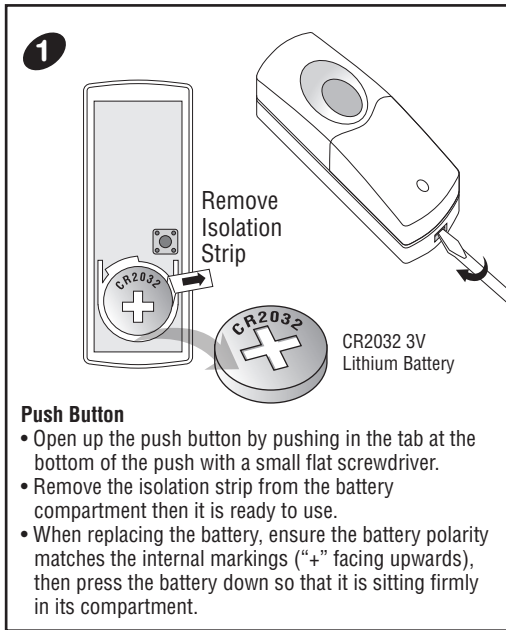


Wire Free Rechargeable Door Chime Kit

SX-201i/201W



Wire Free Rechargeable Door Chime Kit

SX-201i/201W

Push Button unit

Power: 1 x 3volt Lithium battery (CR2032 - included)

Door Chime unit

Power: 3 x 1.2volt "AA" Ni-MH batteries (included)

Melody Selection

There are 8-melodies for selection -

- | | | | |
|--------------------|--------------------|------------------|----------------|
| 1) Tubular 3-notes | 3) Tubular 2-notes | 5) Tubular Scare | 7) Saxophone |
| 2) Big Ben | 4) Solo | 6) Clarinet | 8) Morning Dew |

Additional Byron "SX" range products can be purchased for compatibility.

Digital Code Set Up

The Door Chime kit is equipped with an advanced random and self-learning operation coding ability therefore no setting is needed. Read the following instructions before use.

1. First time operation:

After battery installation on the Push Button, then reset the Door Chime unit by insert a small pin into the small hole marked "Reset" on the back of chime unit and press, the door chime unit will beep twice to indicate that it is ready for new operation code registration. Press the Push Button once and it will generate a new operation code randomly and send a wireless signal to the Door Chime unit, the door chime will sound to indicate that a new operation code is registered and memorised.

2. Interference from similar unit operating nearby:

- Simply remove the battery from the Push Button and rest for 10 seconds, after then insert a small pin into the small hole marked "Reset" on the back of chime unit and press, this will erase the memory. The Door Chime unit it will give 2-beeps to indicate that it is ready for the new code registration.
- Re-insert the battery into the Push Button, then press the Push Button once, it will generate a new operation code randomly and send a wireless signal to the Door Chime and it will sound to indicate that a new operation code is registered and memorised.

3. Front and back door Bell Push operation:

- Remove the battery from the Push Buttons (Front & Back Door) and rest for 10 seconds, after then reset the Door Chime units and this will erase the memory. The Door Chime unit it will give 2-beeps to indicate that it is ready for the new code registration.
- Insert the battery into the Push Buttons (Front & Back Door).
- Press the front door Push Button once, it will generate a new operation code randomly and send a wireless signal to the door chime unit and it will sound to indicate that a new operation code is registered and memorised.
- After, (within 2 minutes) press the back door Push Button once, it will generate a new operation code randomly and send a wireless signal to the door chime unit and it will sound to indicate that a new operation code is registered and memorised. The door chime unit has ability to memorize both operation codes and will only work with it.
- Test to ensure correct operation before final installation.

Door Chime Operation

The function (Mode) selector is located at the back of the unit; press the button to select one of the following functions to operate the chime unit accordingly:

- Sound and Light: The Door chime will sound as well as the Super Bright LED Light will flash to maximizing attention
 - Light Only: The Super Bright LED Light on the Door Chime unit will flash
 - Sound Only: Door Chime unit will sound
- The door chime will start operate at "Sound Only" function initially.
For repeat sound, press the button again. Holding the button in will **NOT** repeat the sound.

Flashing Light Pattern

When (a) Sound + Light OR (b) Light Only mode is selected, press the flashing light pattern button "Light" at the back of the chime unit to select the operation in the following pattern:

- Sound + Light mode - When the door chime sound, it will flash in following pattern:
 - Slow flashing for 5 seconds
 - Fast flashing for 5 seconds

- Flashing intermittent, 2 seconds "On", 1 second "Off" and 2 seconds "On" again
- Light Only mode - The door chime will flash in following pattern without the chime sound:
 - Slow flashing for 10 seconds
 - Fast flashing for 10 seconds
 - Flashing intermittent, 2 seconds "On", 1 second "Off" and 2 seconds "On" again for 2 times.

Door Chime Unit - Charging Procedure

- Connect the charger with A/C-D/C 9volt 300mA adaptor (Byron model SX-36 - included), then plug the adaptor into any convenient wall socket, after then the charger is ready to use.
 - Place the Chime unit on to the charger, the LED on the charger will light up in "Red" to indicate that the batteries are charging.
 - When the LED on the charger lights up in "Green" colour, it is indicating that the charging procedure is completed and the chime unit is ready to use.
- Note: Charge the batteries fully before use.

Important

- Do not mount either unit close to fireplace or expose to high temperatures.
- Do not expose the Door Chime unit to direct sunlight or moisture
- Always use alkaline battery. Please dispose of old, defective batteries in an environmentally friendly manner in accordance with the relevant legislation.
- Make sure that no naked flame sources, such as lighted candles, should be placed on the unit.
- The unit should not be exposed to dripping or splashing and no objects filled with liquids, such as vases, should be placed on the unit.
- CAUTION:** Replace only with the same or equivalent type of battery that is recommended by the manufacturer.
- CAUTION:** Make sure batteries are installed correctly as per the internal markings.
- CAUTION:** Danger of explosion if battery is incorrectly installed or replaced.
- IMPORTANT:** There are no serviceable parts in the units, do not attempt to repair it.

User Instructions

If the door chime unit does not sound, please check the following:

- Flat batteries in either Push Button or Door Chime units - change the Push Button battery and re-charge the Door Chime batteries.
- Wrong battery polarity in either Push Button - re-insert the batteries.
- Push Button and Door Chime units are not on the same operation codes - reset the code (see digital code set up).
- Units are out of range - Operate the Chime unit within the operation range.
- Reset the door chime unit if it does not sound, or has sound distortion.

Specification

Operating Temperature: -10C - +40C

Operating Distance: 100metre (330ft approx. - in open field & at suitable condition)

Selectable Tone: Total Eight (8) melodies available

Selectable Digital Code: Total two hundred fifty six (256) possible digital codes

"Type R2 Device - device where the sound output is created by the initial operation of the control and where the period of sound output continues for the designed duration irrespective of condition of the control."

CH Byron Electrical Ltd
Byron House
34 Sherwood Rd, Astonfield
Bromsgrove, B60 3DR
UK
Tel: 0845 2301231
e: support@chbyron.com
w: www.chbyron.com



Byron		433MHz	
R&TTE APPROVED		CE0681	
A	IRL	UK	M
B	L	BG	N
DK	EST	CZ	SK
FIN	NL	EST	SLO
F	P	H	CH
D	E	IS	PL
GR	S	LV	RO
LT			

CH Byron Electrical United Kingdom. www.chbyron.com